

## Gas Chromatograph - Equipment for Mud Logging



This small portable gas chromatograph comes with good peak separation, wide-scale range, and a good sensitivity for the detection of hydrocarbon. It uses a flame ionization detector (FID) to measure C1-nC5 within 90 seconds. This gas chromatograph combines key features for mud logging applications such as: ease of use, speed, LAS file format and WITS data stream.

### Features:

- Analysis of C1-nC5 hydrocarbons in 90 seconds
- C1-nC4 within 60 seconds
- Automatic calibration
- Portable
- Built-in integration of software
- Output CSV/LAS/TXT and WITS serial
- Input serial WITS into database
- Hydrogen shut-off safety valve
- Ethernet communication

### Optional:

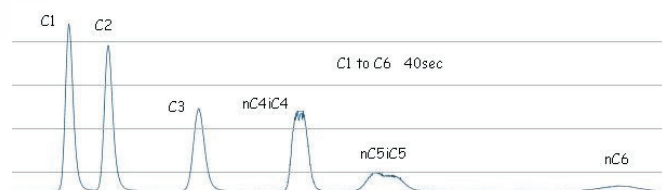
- 60 second analysis time
- Detection of C6
- Total hydrocarbon and CO2 analysis

### Requirements:

- Hydrogen (typical): 30cc/min, 50PSI
- Air (typical): 200cc/min, 70PSI (hydrocarbon + moisture-free)
- Sample: 100cc/min (moisture-free)
- Power 110V/60Hz 75W

### Specifications:

- Analysis time: 90 seconds
- Detector: Flame Ionization Detector
- Oven temperature (typical): 50° C
- Dynamic range: 10ppm to 100% methane
- Dimensions: 12"x8"x5"
- Weight: 10 pounds



## Total Hydrocarbon Analyzer + Cuttings Gas Analyzer



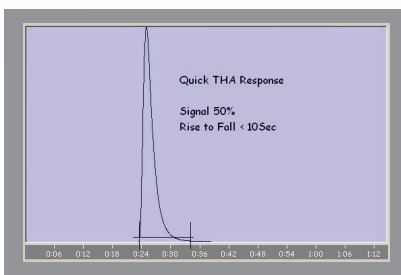
This small instrument combines the functionality of a total hydrocarbon analyzer (THA) and a cuttings gas analyzer. The THA uses a Flame Ionization Detector (FID). This design provides key features for well logging applications such as: ease of use, wide measuring range, quick response time, WITS data stream.

### Features:

- Calibration error check
- Direct WITS serial output
- No additional software/hardware required
- Flame out detection
- Hydrogen shutoff safety valve
- Programmable alarm
- Detection of sample line blockage
- Cuttings gas analysis method (Just add a Blender)
- Internal sampling pump (can be bypassed)
- Configuration via any RS Terminal

### Specifications:

- Detector: Flame Ionization Detector
- Dynamic range: 10ppm to 100% methane
- Resolution: 10ppm
- Rising response time: < 5 sec
- Report rate: 10 per sec
- Siren: 80db
- Dimensions: 8"x5"x12" deep
- Weight: 5 pounds



### Requirements:

- Hydrogen: 20cc/min, 50PSI
- Air: 100cc/min, 50PSI (HC & moisture free)
- Power: 110/220V 50/60Hz 25W